



# Bastrop High School

Bond 2021 Work





# BASTROP HIGH SCHOOL



## PROJECTS INCLUDED IN PROPOSITION A:

- Redesigned front entry for enhanced security
- New academic wing of classrooms to replace aging portables
- Expansion and renovation of Career & Technical Education facilities
- Addition of dance facility and renovation of choir hall
- Renovation of restrooms in main building
- Upgrade of interior building lighting
- Interior refurbishments including paint, new doors, new ceilings and flooring in classrooms and hallways
- Dressing facilities, restrooms and concession renovation for baseball complex
- Dressing facilities, restrooms and concession renovation for softball complex
- Roof repair and replacement
- Mechanical/HVAC upgrades, including controls

## PROJECTS INCLUDED IN PROPOSITION B:

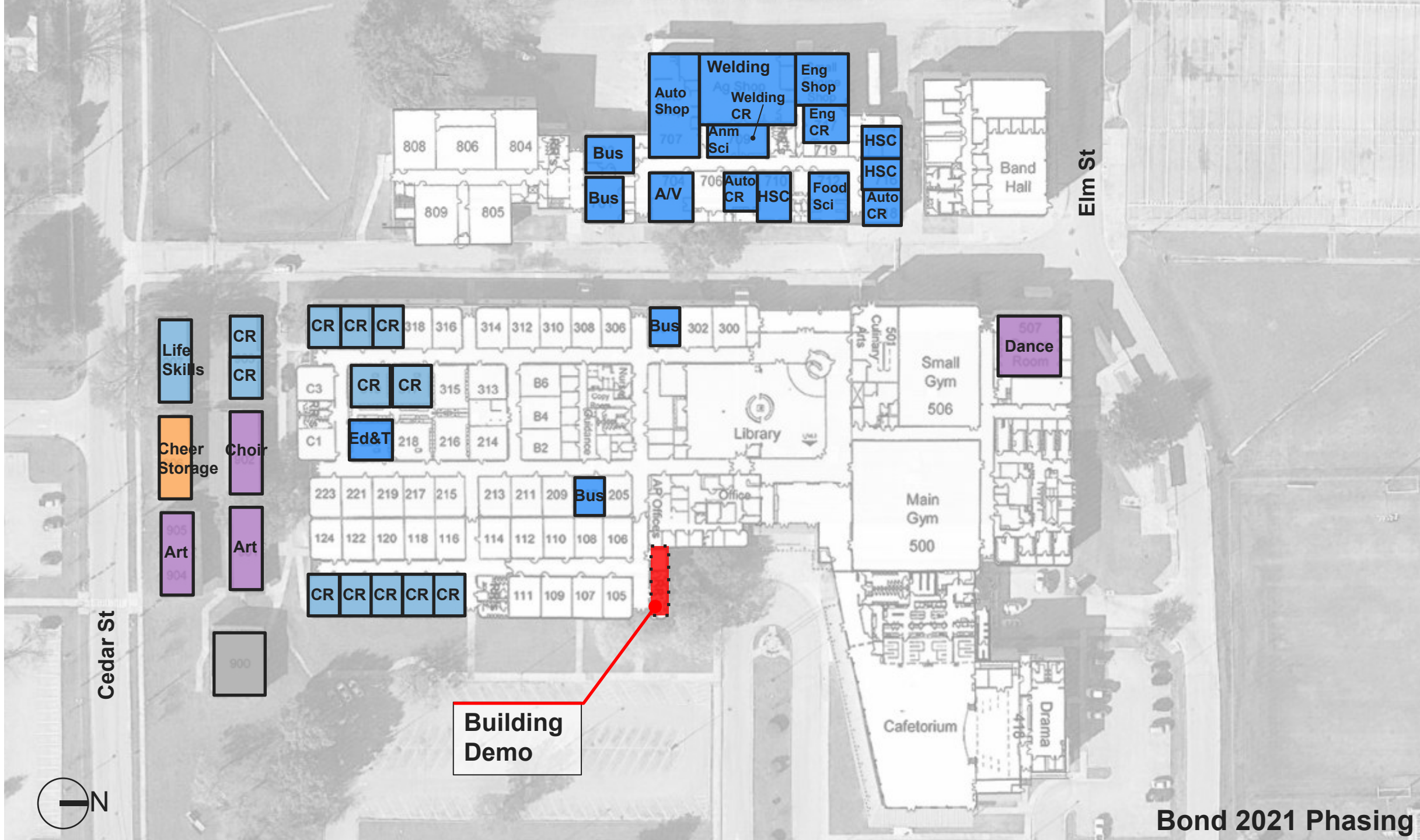
- Artificial surface for Erhard Field
- Expansion of weight room
- Renovation of sports center including locker rooms, restrooms, showers, flooring/ceiling, and paint



Cedar St

Elm St





Cedar St

Elm St



Building Demo

Life Skills

Cheer Storage

Art

CR

Choir

Art

CR CR CR

CR CR

Ed&T

CR CR CR CR CR

808 806 804

809 805

Bus

Auto Shop

Welding CR

Eng Shop

Welding CR

Eng CR

Anm Sci

HSC

Bus

A/V

Auto CR

HSC

Food Sci

Auto CR

Band Hall

CR CR CR

318 316 314 312 310 308 306

Bus

302 300

C3

CR CR

315 313

86

84

82

Library

Quinary Arts

501

Small Gym

507 Dance Room

223

221

219

217

215

213

211

209

205

Bus

AP Offices

Office

Main Gym

500

124

122

120

118

116

114

112

110

108

106

CR CR CR CR CR

111

109

107

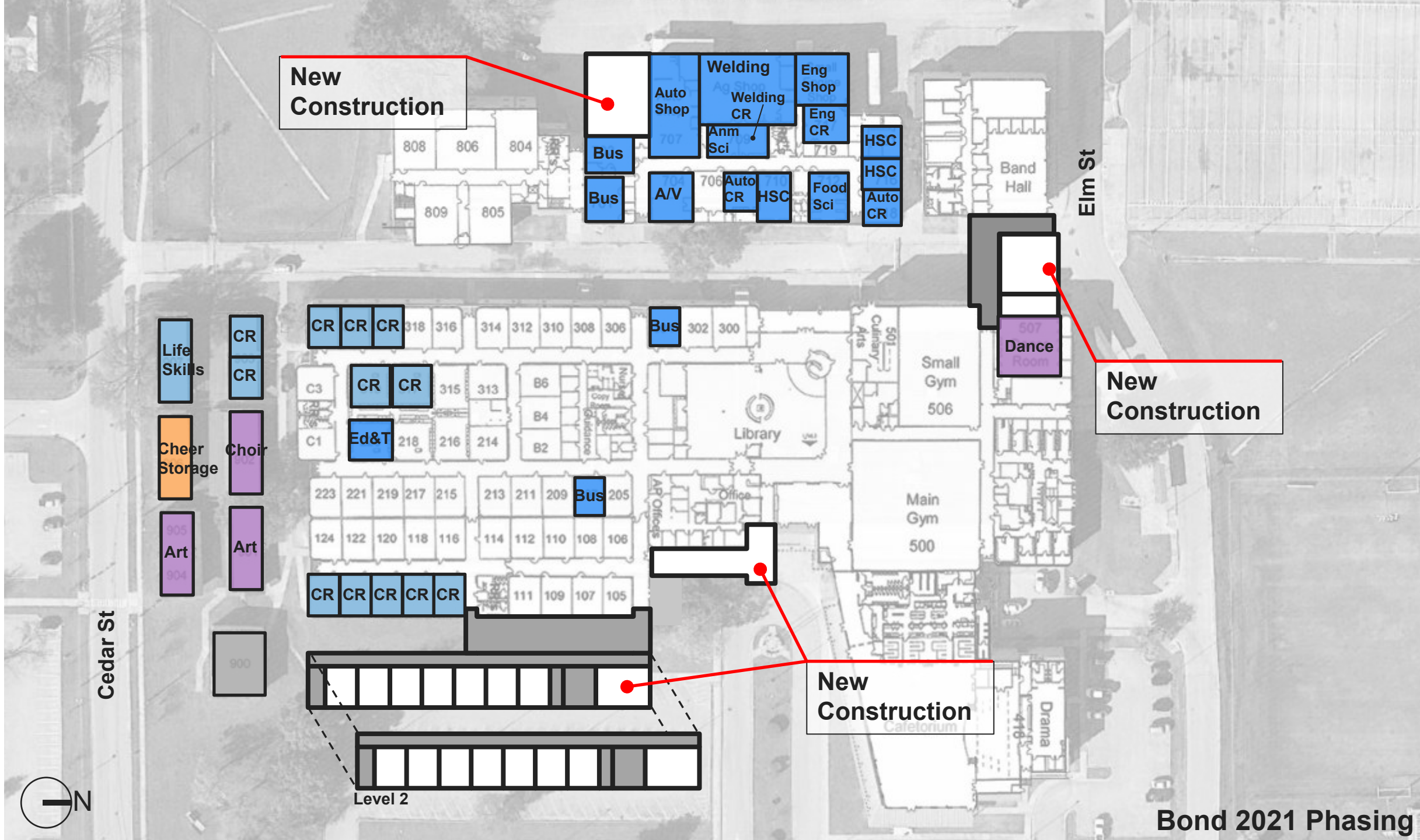
105

Cafetorium

Drama

418

900



New Construction

New Construction

New Construction

Cedar St

Elm St



Level 2



Cedar St

Elm St

Relocate Dance

Level 2





Life Skills

Cheer Storage

Art  
905  
904

CR  
CR

902

Art

CR CR CR

CR CR

Ed&I

CR CR CR CR CR

808 806 804

809 805

Bus

A/V

Welding CR

Anm Sci

Eng CR

Auto CR

HSC

Food Sci

HSC

HSC

Auto CR

Bus

Bus

AP Offices

Library

Office

Main Gym  
500

Small Gym  
506

Dance

507  
Choir Room

Relocate Choir

Elm St

Cedar St



Level 2



Cedar St

Elm St



Level 2

Relocate Cheer Storage

Life Skills

CR

CR CR CR

CR CR

906

902

Art 905

Art 904

Ed&T

CR CR CR CR CR

900



808 806 804

809 805

Bus

A/V

Auto Shop

Welding CR

Eng Shop

Anm Sci

Eng CR

HSC

HSC

Auto CR

Auto CR

HSC

Food Sci

Band Hall

Dance

Cheer

507

Choir Room

318 316 314 312 310 308 306

315 313

318 316 314 312 310 308 306

315 313

318 316 314 312 310 308 306

218 216 214

223 221 219 217 215

124 122 120 118 116

111 109 107 105

Bus

302 300

Bus

205

205

Library

Office

Small Gym

506

Main Gym

500

Cafetorium

Drama

418





**Relocate Classrooms**

CR CR CR CR CR

Level 2





**Relocate Classrooms**

Level 2





Cedar St

Elm St

Relocate Classrooms

Level 2



Life Skills

Art

Art

CR CR  
Ed&T

Auto Shop  
Welding CR  
Eng Shop  
Welding CR  
Anm Sci  
Eng CR  
HSC  
A/V  
Auto CR  
HSC  
Food Sci  
Auto CR

Dance  
Cheer  
507  
Choir Room

Small Gym 506  
Main Gym 500

Cafetorium  
Drama

808 806 804  
809 805  
224 322 320 318 316 314 312 310 308 306  
C3 CR CR 315 313 86  
C Ed&T 218 216 214 84  
223 221 219 217 215 213 211 209 205  
124 122 120 118 116 114 112 110 108 106  
123 121 119 117 111 109 107 105

Library

Office

AP Offices

501  
Quinary Arts

Band Hall

CR CR CR CR CR CR CR CR

CR CR CR



Relocate Life Skills





Cedar St

Elm St

Life Skills

Ed&T

Art  
905  
904

Art

Auto Shop  
Welding CR  
Eng Shop  
Eng CR  
HSC  
HSC  
Auto CR  
A/V  
Auto CR  
HSC  
Food Sci  
Auto CR

Dance  
Cheer  
507  
Choir Room

CR CR CR CR CR CR CR CR

CR CR CR CR CR

Level 2

Relocate Classrooms



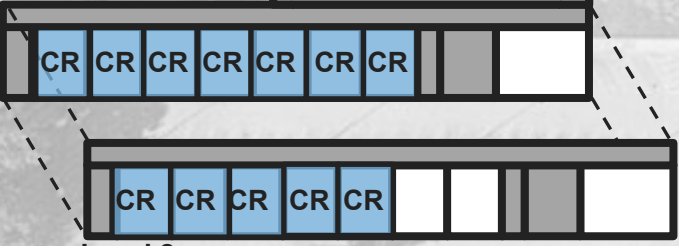


Relocate  
CTE



Cedar St

Elm St



Level 2



**Relocate  
CTE**

Life Skills

Bus Bus

Ed&T

Art  
905  
904

Art

CR CR CR CR CR CR CR CR

CR CR CR CR CR

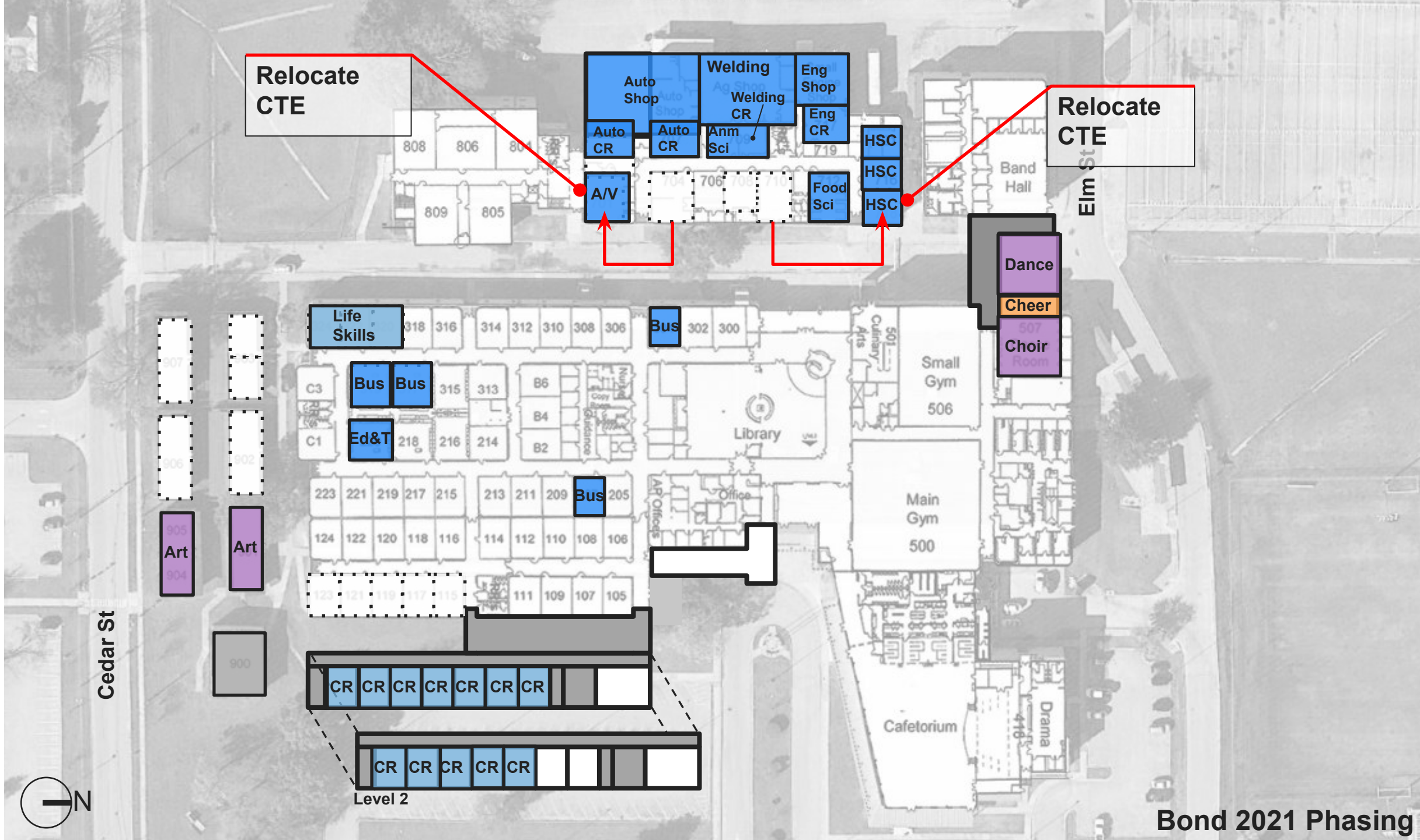
Level 2

Dance  
Cheer  
507  
Choir  
Room

Elm St

Cedar St



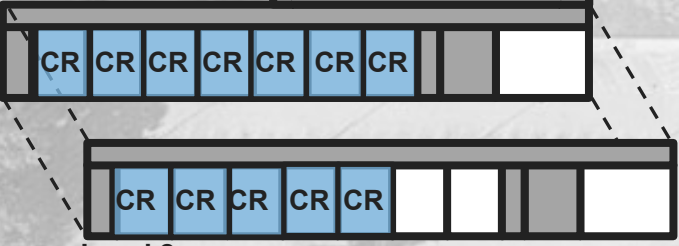


Relocate CTE

Relocate CTE

Cedar St

Elm St







**Relocate  
Art**

Level 2



Remove Portables

Life Skills

Bus Bus

Ed&T

Bus

Auto Shop, Welding, Eng Shop, Auto CR, Auto CR, Anm Sci, Welding CR, Eng CR, HSC, HSC, HSC, A/V, Art, Art, Art, Food Sci

Dance, Cheer, 507 Choir Room

CR CR CR CR CR CR CR CR

CR CR CR CR CR

Level 2

Cedar St

Elm St



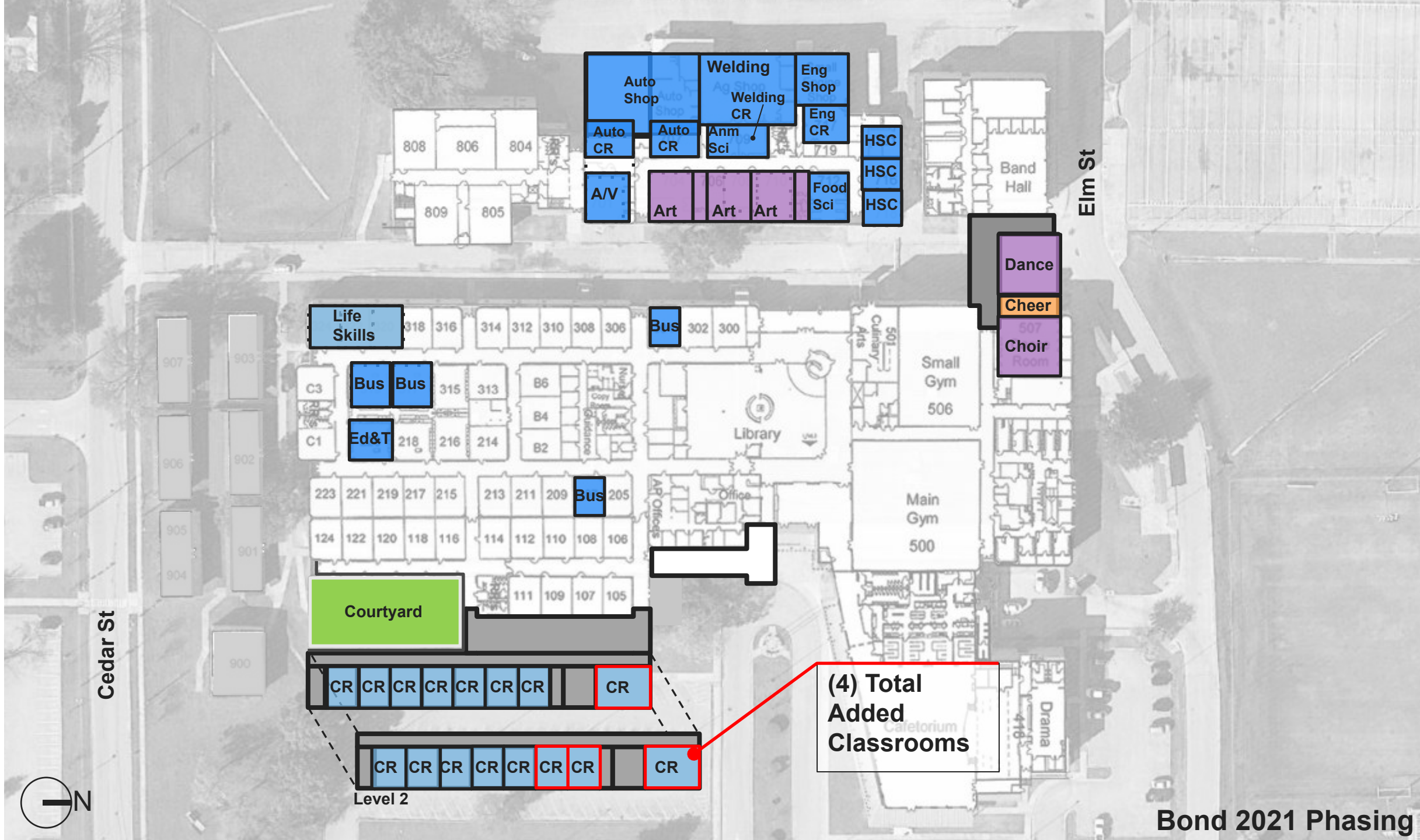


**Demo Classrooms/  
Create Courtyard**

Cedar St

Elm St





Cedar St

Elm St

Life Skills

Bus Bus

Ed&T

Auto Shop Welding Eng Shop  
Auto CR Auto CR Anm Sci Welding CR Eng CR

A/V Art Art Art Food Sci  
HSC HSC HSC

Dance  
Cheer  
507  
Choir Room

Courtyard

CR CR CR CR CR CR CR CR CR

CR CR CR CR CR CR CR CR CR

Level 2

(4) Total Added Classrooms





Cedar St

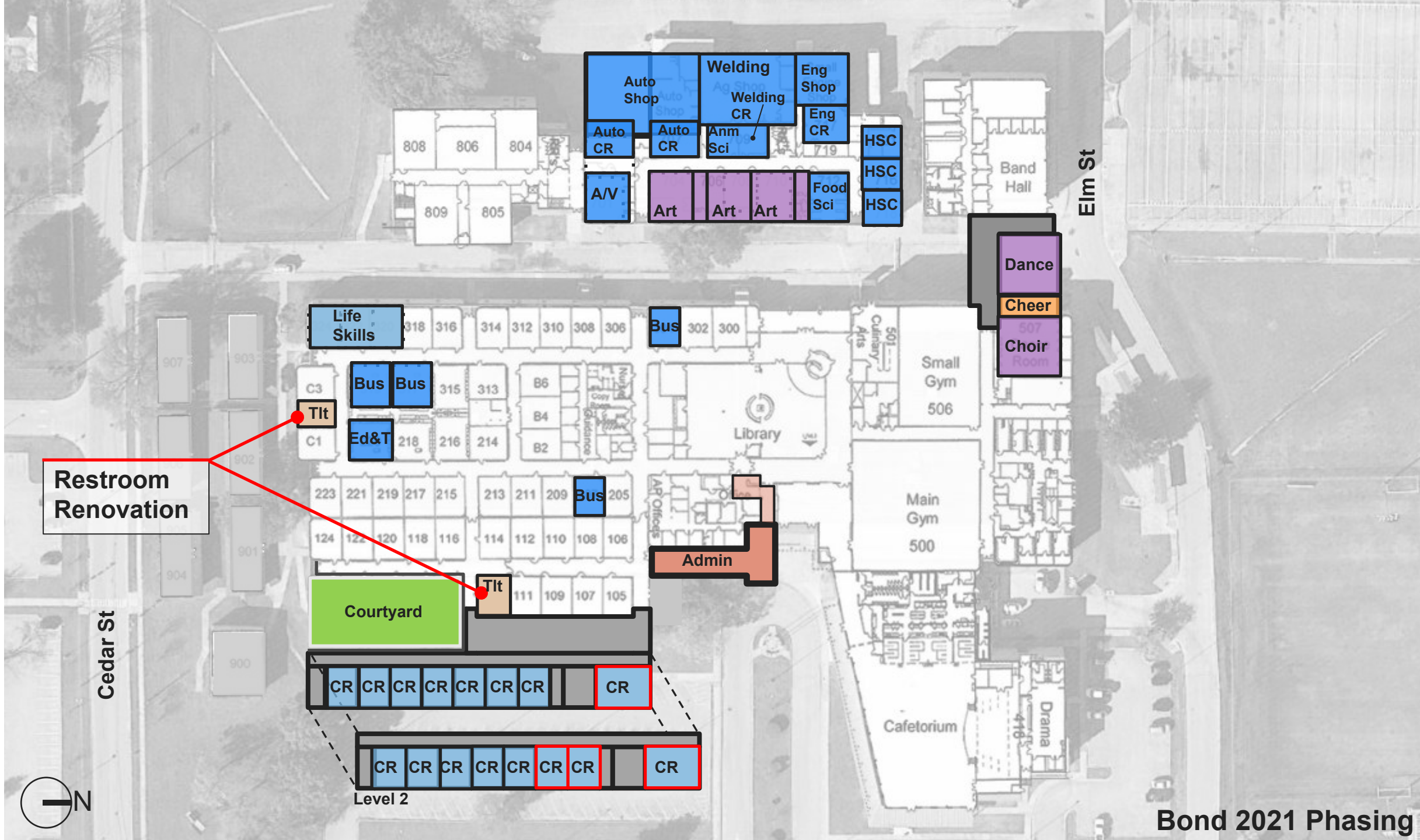
Elm St

Renovate Existing Entry

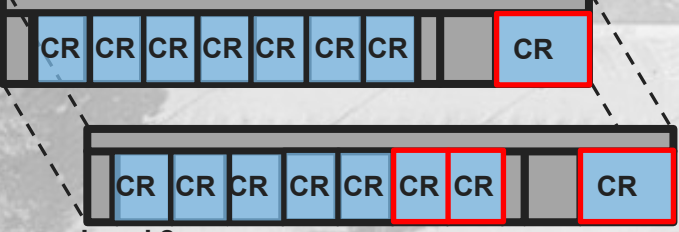
New Admin Entry

Level 2



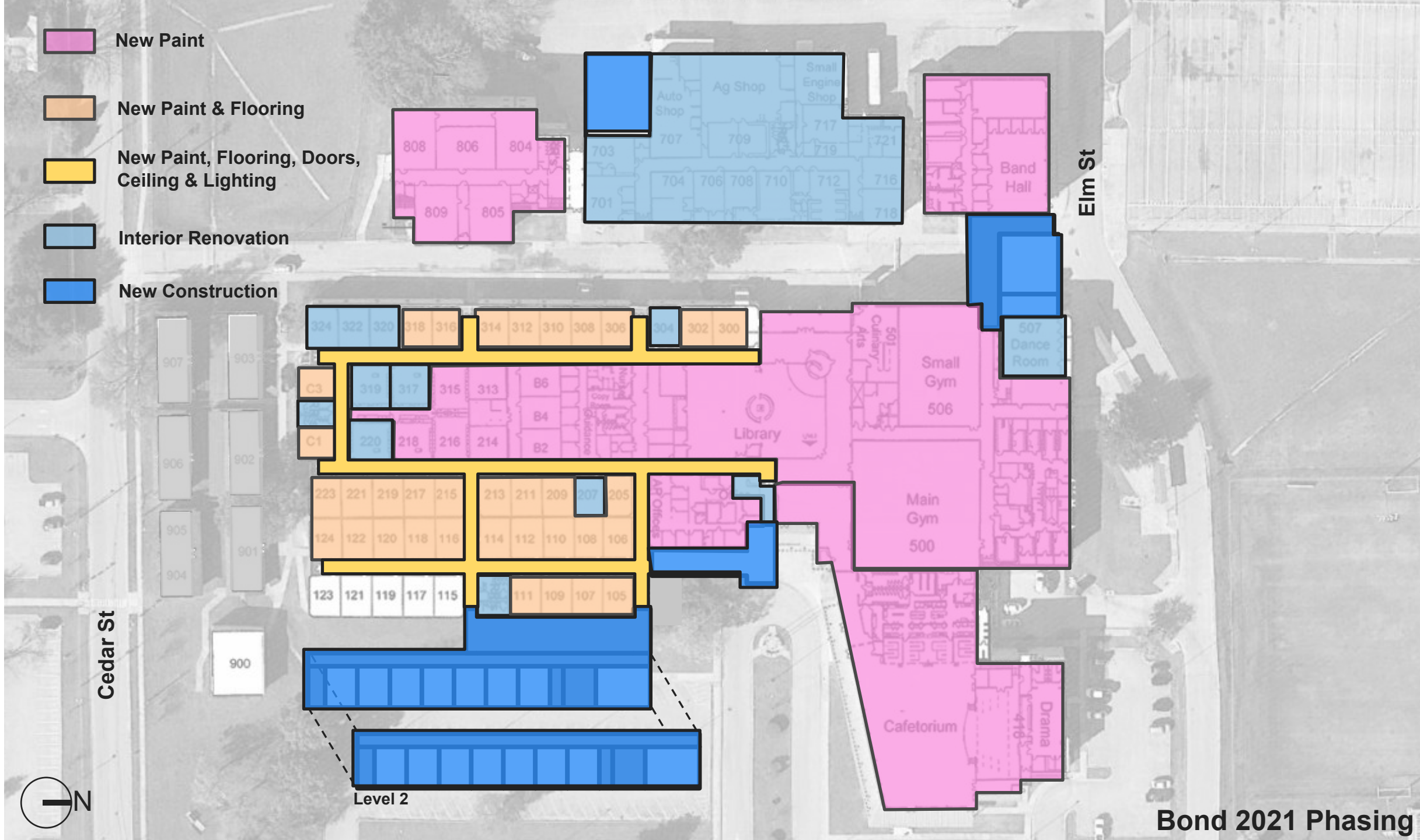


**Restroom Renovation**





-  New Paint
-  New Paint & Flooring
-  New Paint, Flooring, Doors, Ceiling & Lighting
-  Interior Renovation
-  New Construction



Cedar St

Elm St

Level 2



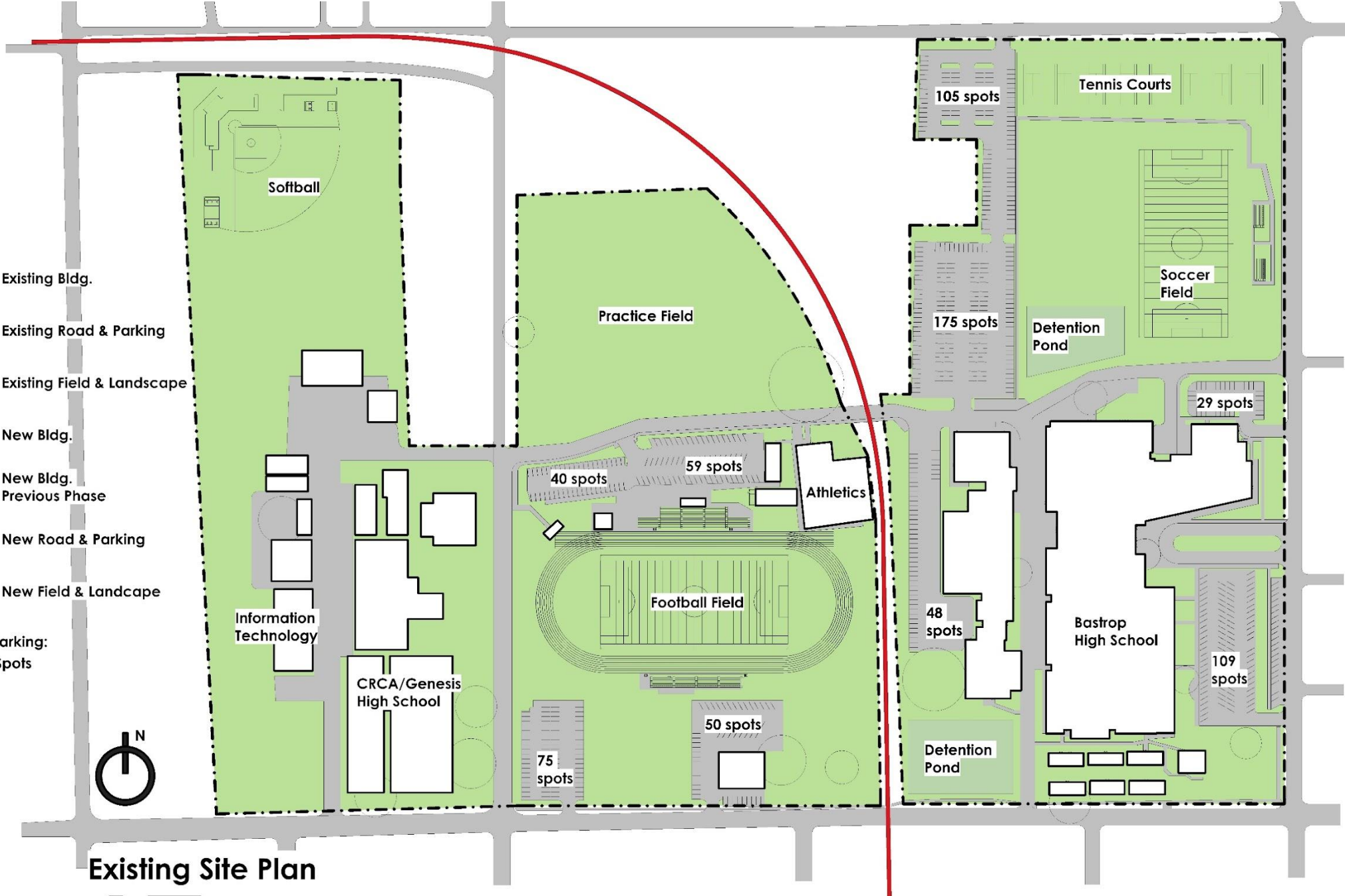


- Existing Bldg.
- Existing Road & Parking
- Existing Field & Landscape
- New Bldg.
- New Bldg. Previous Phase
- New Road & Parking
- New Field & Landscape

Total Parking:  
690 Spots



### Existing Site Plan





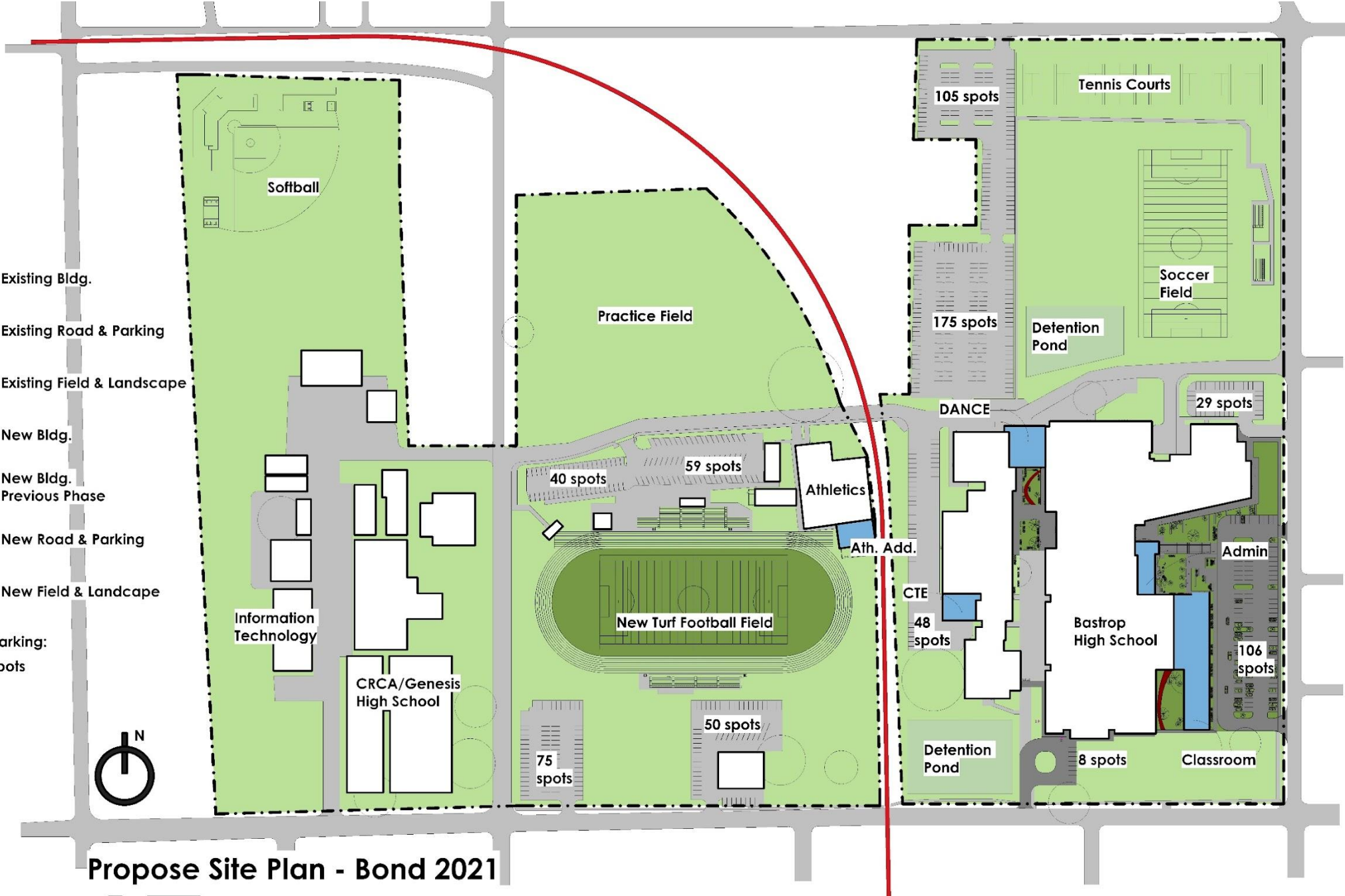


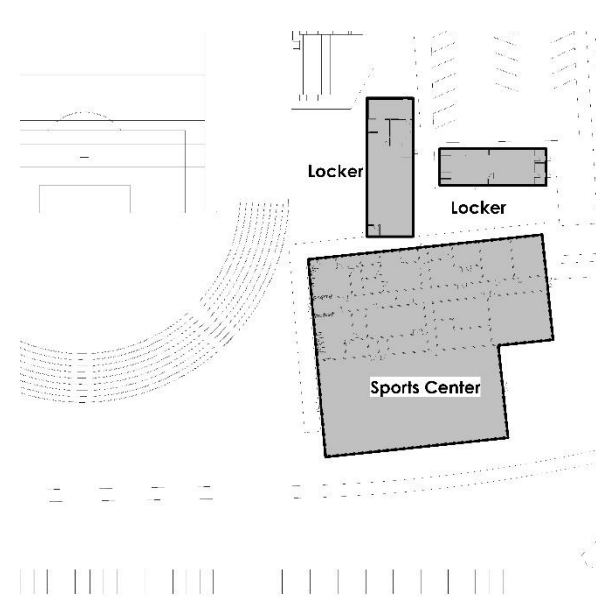
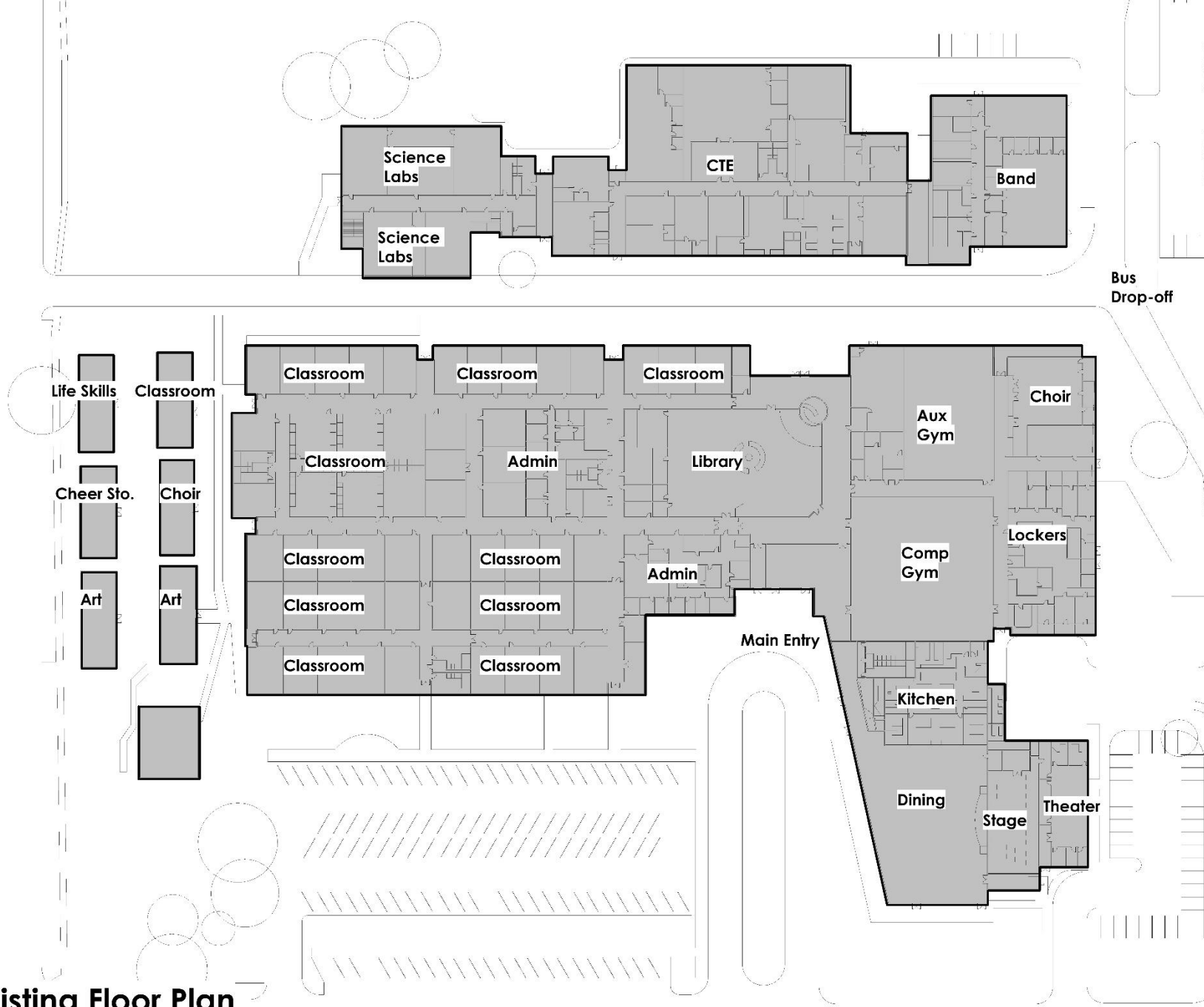
- Existing Bldg.
- Existing Road & Parking
- Existing Field & Landscape
- New Bldg.
- New Bldg. Previous Phase
- New Road & Parking
- New Field & Landscape

Total Parking:  
695 Spots

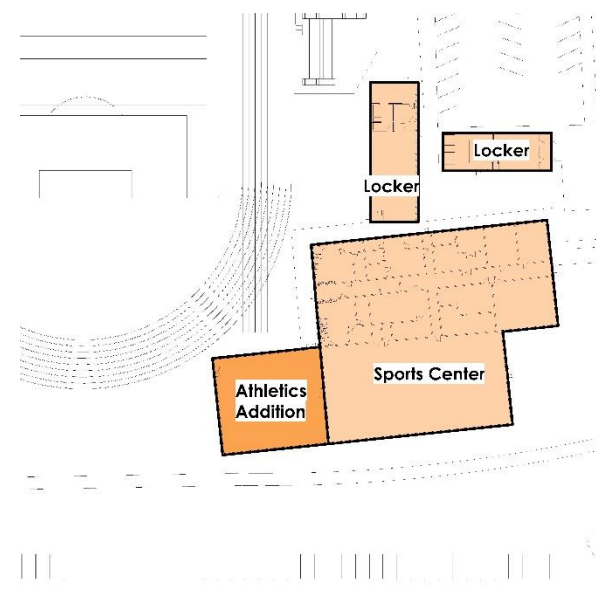
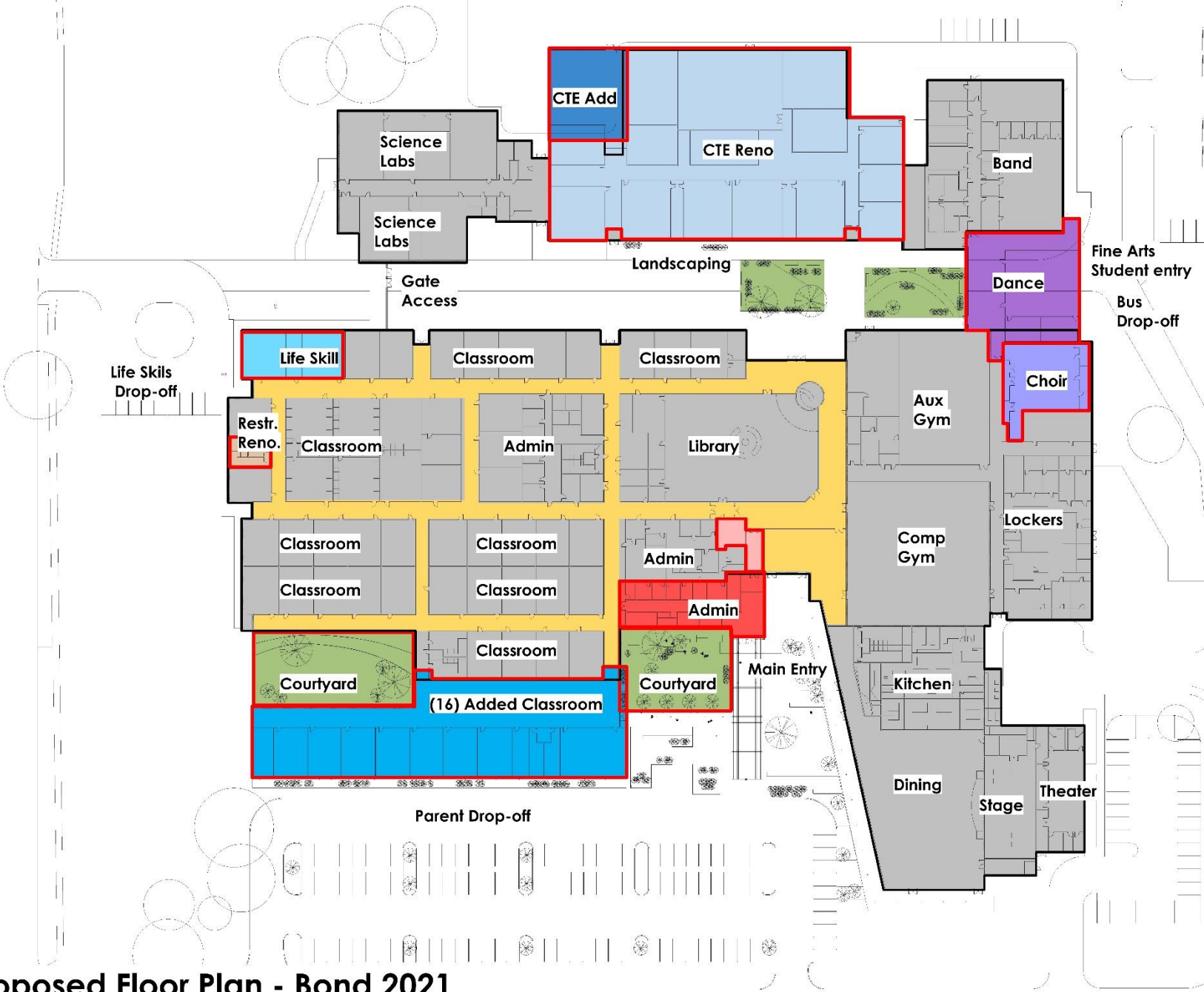


### Propose Site Plan - Bond 2021





Existing Floor Plan



Proposed Floor Plan - Bond 2021





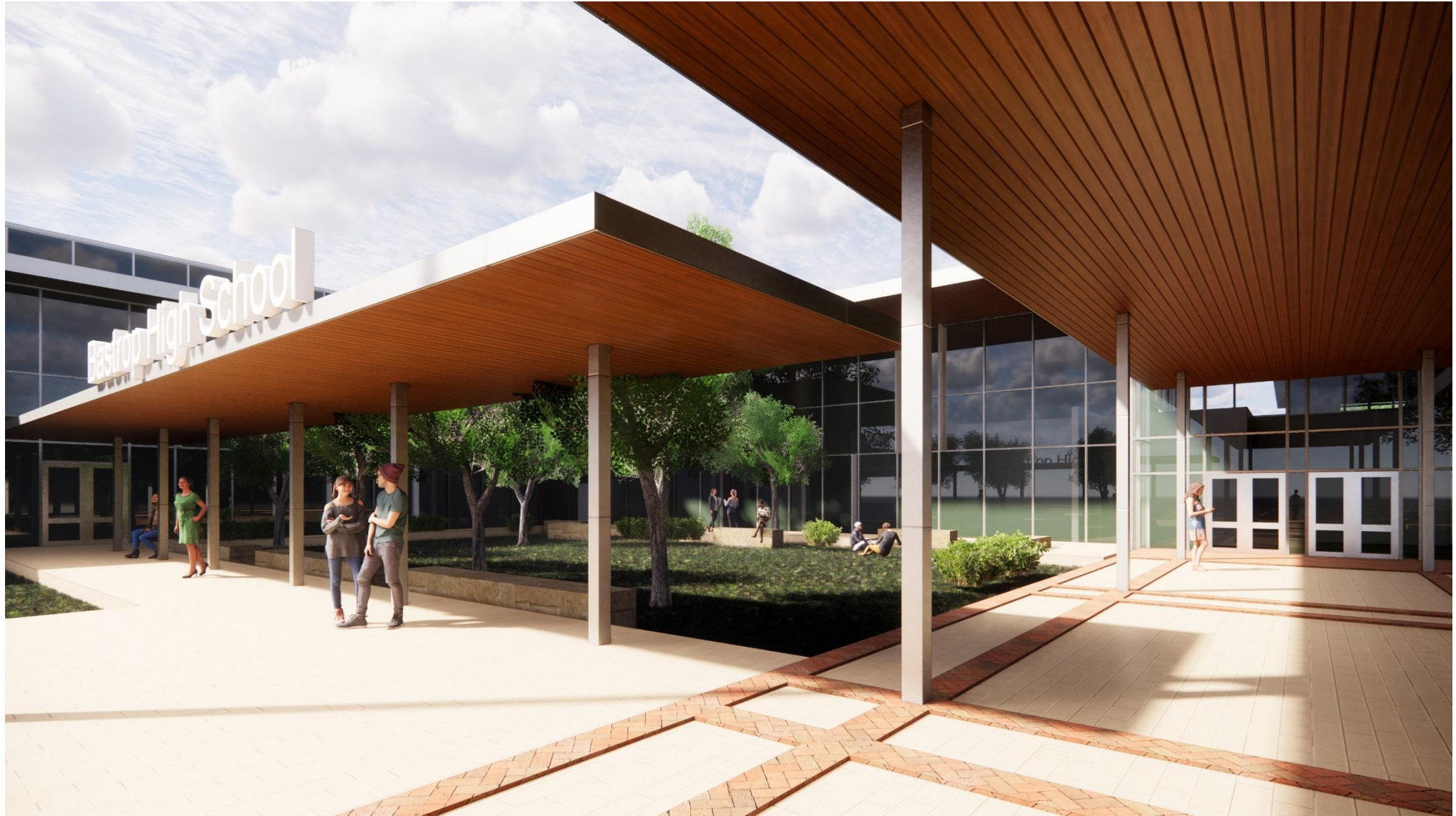


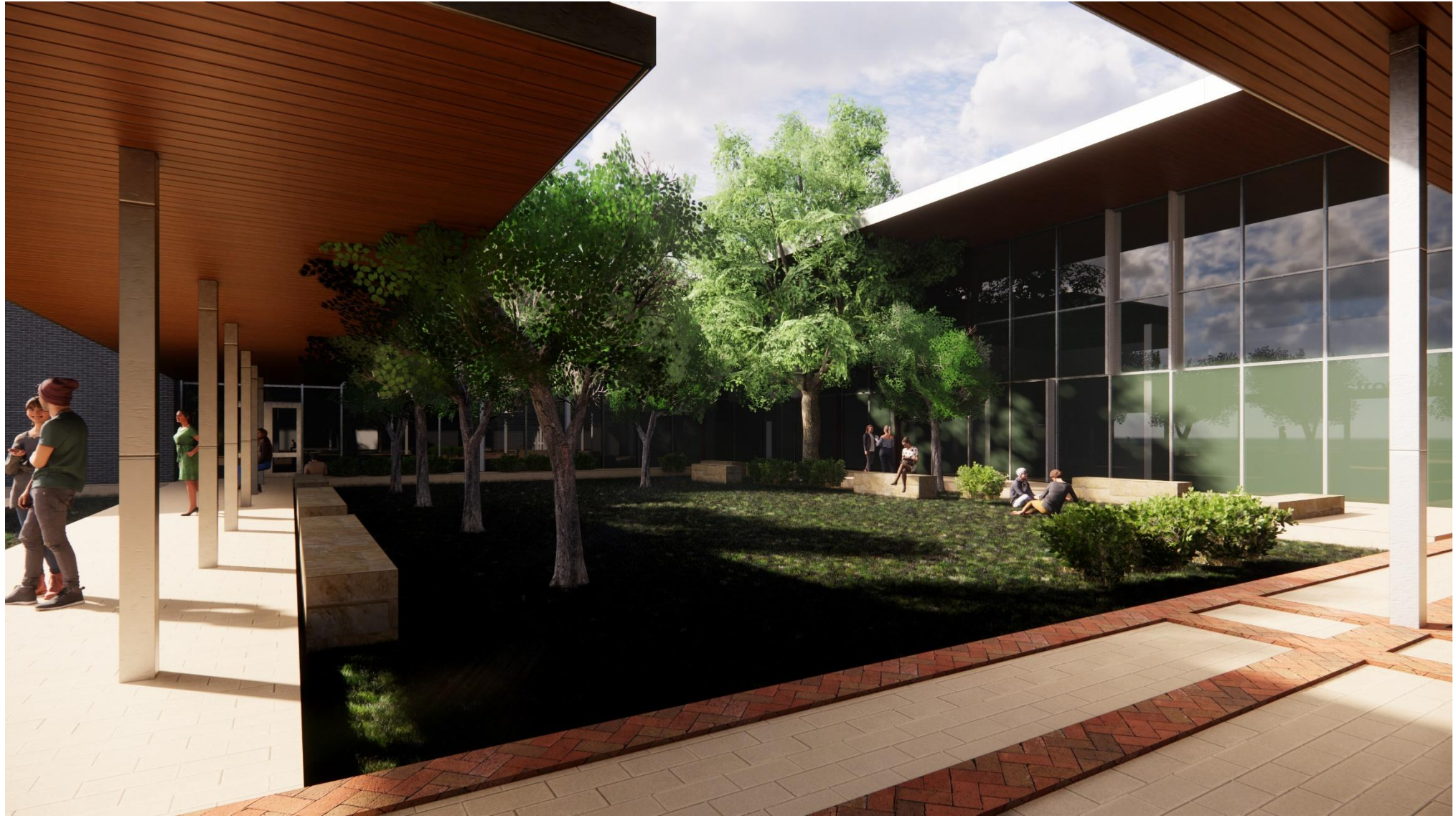
















# Bastrop High School

Master Plan



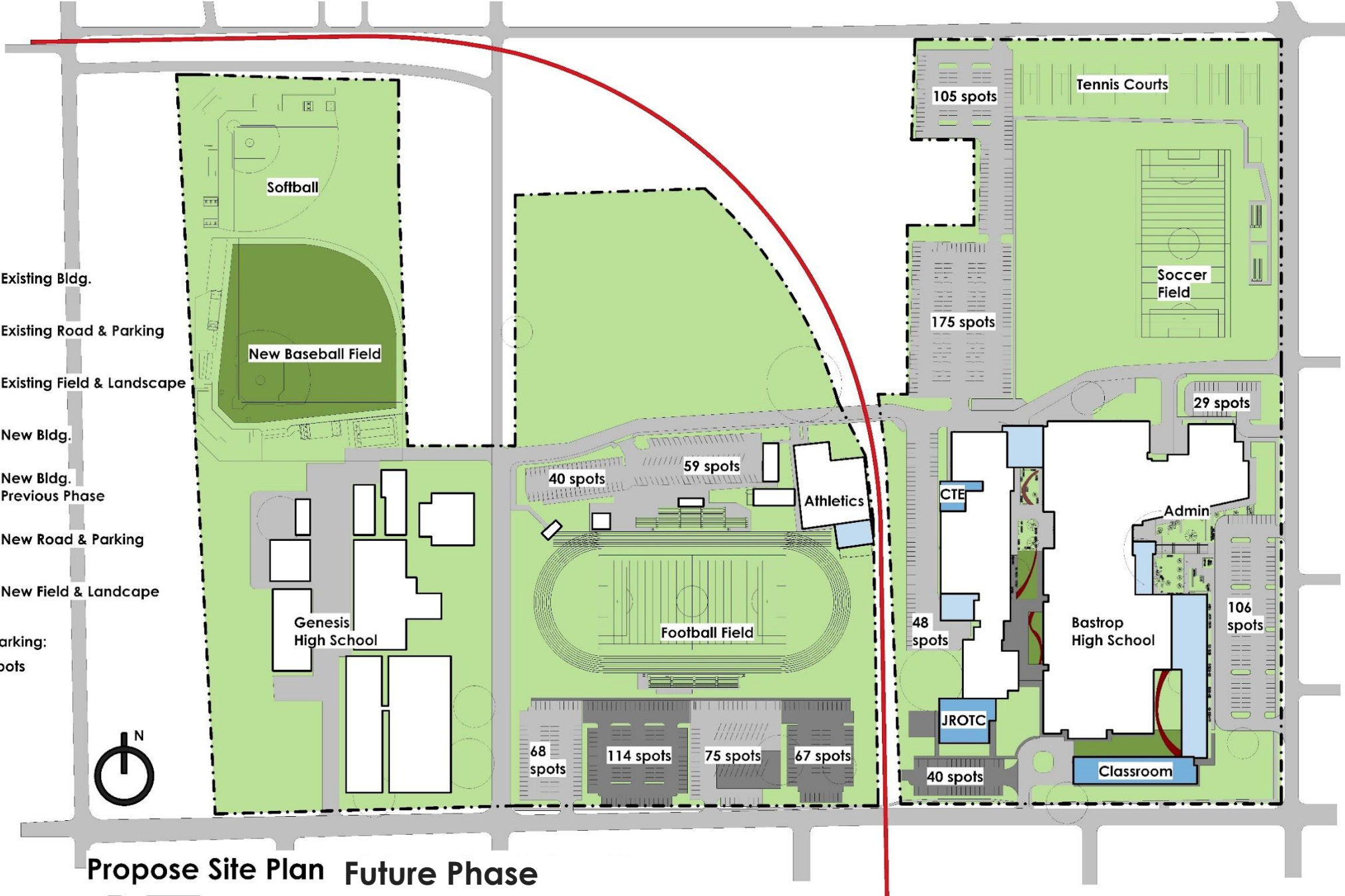


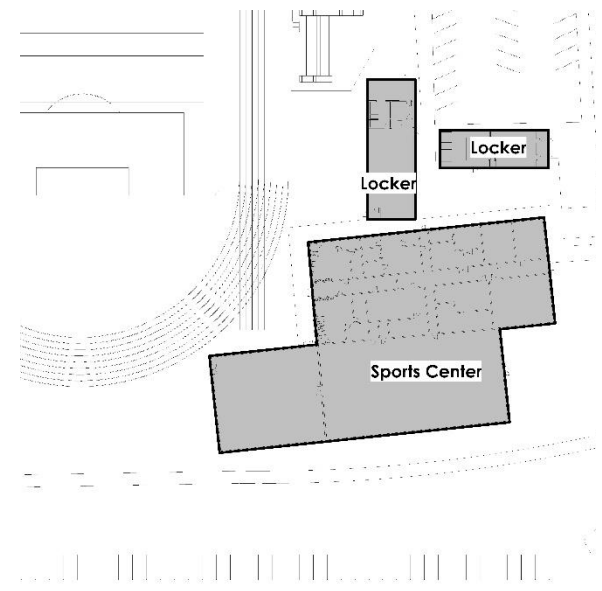
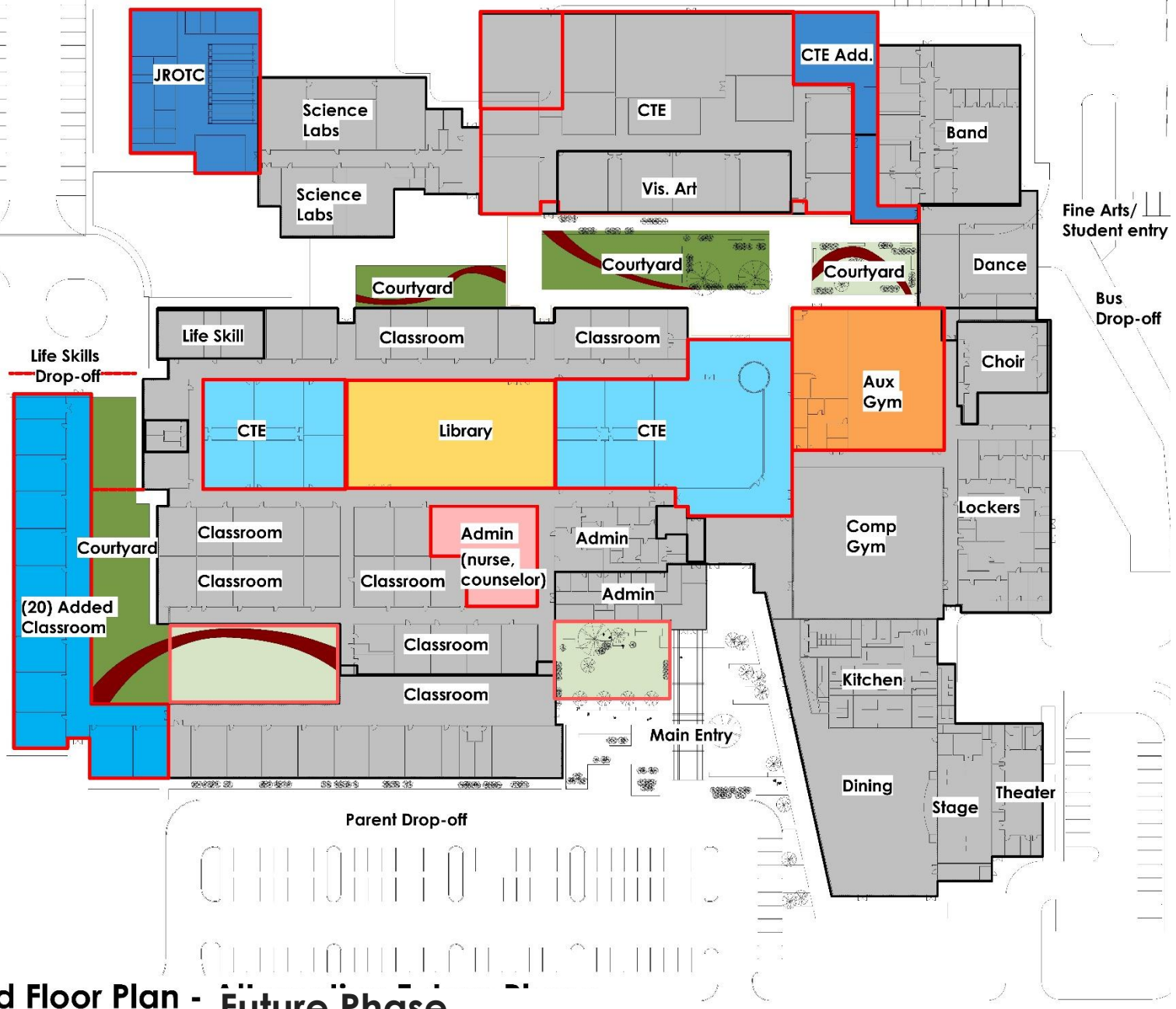
- Existing Bldg.
- Existing Road & Parking
- Existing Field & Landscape
- New Bldg.
- New Bldg. Previous Phase
- New Road & Parking
- New Field & Landscape

Total Parking:  
926 Spots



### Propose Site Plan Future Phase





Proposed Floor Plan - Future Phase



Questions?